

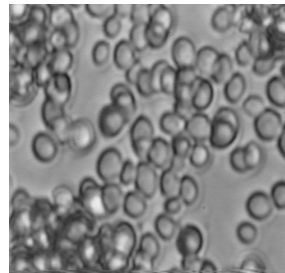
# CANTY

PROCESS TECHNOLOGY

## Particle Sizing Software

**The Vector NT™ System – Accuracy, Reliability You Can Depend On**

- ◆ Particle Sizing System is powered by a Microsoft Windows NT™ based image analysis system
- ◆ Analyzes real-time video of your particles using a Canty Vision Camera System
- ◆ Standard video format – can be recorded on any VCR or saved to disk. Digital video options.
- ◆ Industrial microprocessor
- ◆ Multiple software process control packages
- ◆ 8 Channel 4-20 mA output
- ◆ Up to four video inputs standard
- ◆ Ethernet network interface standard
- ◆ Modem for factory support, file sharing



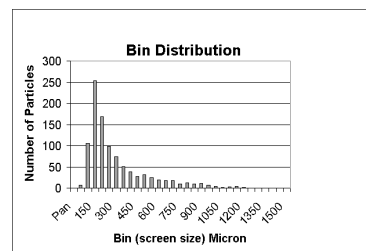
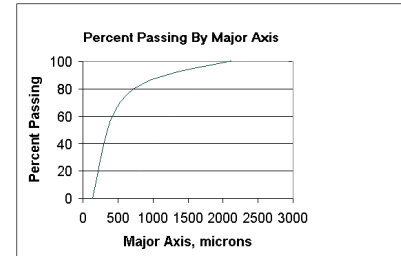
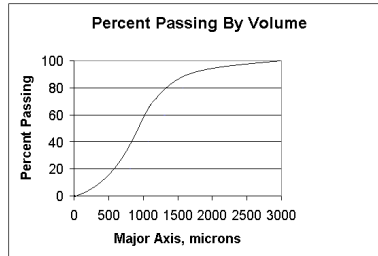
Time	AREA	PERIMETER	MAJOR AXIS	MINOR AXIS	Channel	DA Count
12 10 20 21	160110 0481	2000 2491	1180 625	616 678	1	0
12 10 18 74	280110 0881	3484 121	1586 840	802 877	1	611
12 10 16 85	280600 0326	2970 828	1618 128	516 547	1	1623
12 10 15 793	280600 058	2988 821	1603 131	782 688	1	1625
12 10 14 24	281000 385	2970 308	1614 174	522 100	1	2047
12 10 13 51	281000 176	2788 885	1605 165	511 847	1	2050
12 10 12 272	284200 730	2437 497	1609 771	583 883	1	2071
12 10 11 47	284700 176	2788 872	1611 152	488 584	1	2082
12 10 10 855	286600 030	2920 309	1617 737	635 226	1	2093
12 10 10 268	270010 186	2483 127	1600 874	680 899	1	2104
12 10 9 186	282001 238	2411 122	1596 787	588 824	1	2115
12 10 8 376	286600 889	2889 372	1611 113	581 843	1	2126
12 10 7 201	184801 760	1858 668	1591 167	789 482	1	2137
12 10 20 311	184801 238	1858 625	1601 113	583 713	1	2148
12 10 19 768	184801 060	1858 606	1601 113	602 841	1	2159
12 10 18 768	281974 176	3016 622	1716 646	528 842	1	2170
12 10 17 768	184801 060	1858 128	1600 113	528 752	1	2181
12 10 16 871	281443 730	1874 866	1676 676	475 827	1	2192
12 10 15 846	184801 030	1858 100	1604 113	528 841	1	2203
12 10 14 271	180844 870	1716 748	1600 113	436 800	1	2214
12 10 13 271	180844 100	1676 676	1576 600	528 841	1	2225
12 10 12 871	184801 110	1858 625	1601 113	514 477	1	2236

### Particle Size Analysis

- ◆ Replaces and correlates to screen analysis
- ◆ Particle distribution by major, minor diameter
- ◆ Particle area
- ◆ Particle perimeter
- ◆ Vision camera system establishes size range
- ◆ All data is available in EXCEL spreadsheet format
- ◆ Various spreadsheet templates provided
- ◆ Template macros provide link to latest measurement data
- ◆ Custom analysis using spreadsheet formulas

### Data Analysis and Graphs

- ◆ Histogram Distribution – Bin Size
  - Major Axis
  - Minor Axis
  - Average Size
- ◆ Percent Passing by Volume vs. Particle Size
  - Major Axis
  - Minor Axis
- ◆ Easily customized by user for virtually any custom function, graph
- ◆ User can customize EXCEL cell formulas, output to 4-20mA signal

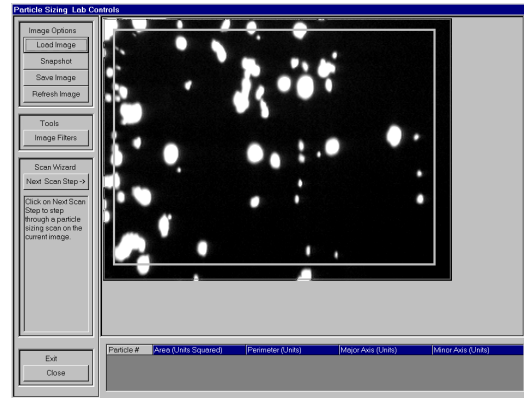
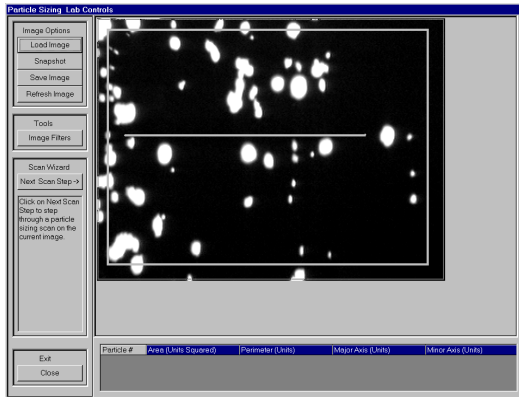


### Data Archive

- ◆ All data may be stored as archive in electronic format
- ◆ Measurement data may be shared by computer network for remote analysis

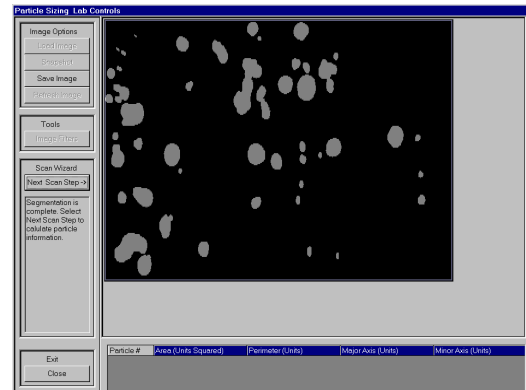
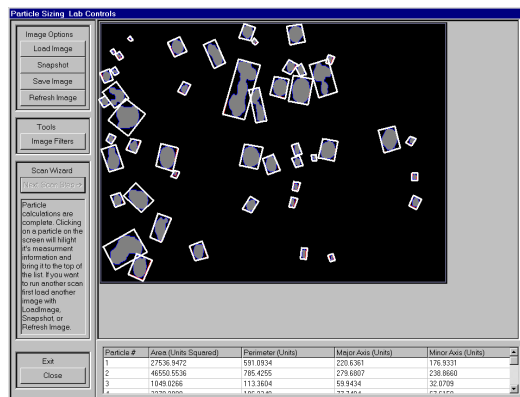
## Easy To Use, Easy To Calibrate

Step 1) Select a portion of the live video image to continuously analyze by placing a boundary box on the live video image. Particles within this box will be analyzed. Any particle outside of his boundary will be discarded.



Step 2) Calibration is easily accomplished by drawing a reference line on the image corresponding to a known size (mm, micron, etc). A simple graticule or known size reference, such as a microsphere, will be correlated to size of the reference calibration line, providing an accurate scale for particle size analysis.

Step 3) The image is thresholded by the software, and each individual particle within the image is digitally mapped and analyzed. The major diameter, minor diameter, area and perimeter are measured, and logged into an EXCEL spreadsheet for each particle detected.



## VISUAL VERIFICATION

Visual verification of particles truly sets Canty apart from all other systems. Each particle analyzed is clearly displayed on the screen. There is no guessing with a Canty Particle Sizing System – you will be able to visually verify your particle size for unmatched accuracy and repeatability.

Microsoft Windows NT ® is either a registered trademark or trademark of Microsoft Corporation in the United States and/or other countries.

Reference data sheet 99A8035 for ordering information  
A8356 1-081500

JM Canty Inc Buffalo, NY USA

Ph: (716) 625-4227

Fax: (716) 625-4228

JM Canty Ltd Dublin, Ireland

Ph: +353 (01) 459 8808

Fax: +353 (01) 462 5133