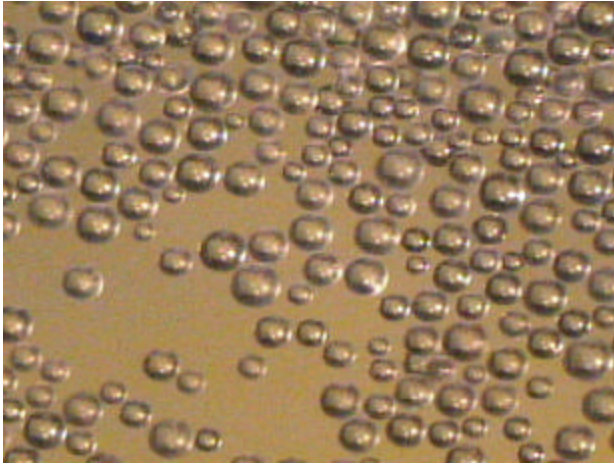


# CANTY

## PROCESS TECHNOLOGY

### EXPANDED POLYSTYRENE SIZING



#### APPLICATIONS

- Styrene Bead Growth Monitoring and Control
- On-line size measurement permits process control for improved yield
- On-line Process Monitoring generates alarms on upset

#### BENEFITS

- Process image display provides visual verification for reality check
- Real-Time On-line Process control

#### HOW IT WORKS

The JM Canty Expanded Polystyrene Sizing system is a vision-based measurement system used with a Canty Vector for on-line particle size analysis. The system includes a B&W camera with variable magnification lens, integral light source with flexible fiber optic light guides to view the product particles being formed in the process environment. The camera video is provided to the Canty Vector System for particle size analysis.

#### CANTY VECTOR

- Particle Sizing System is powered by a Microsoft Windows NT based image analysis system
- Analyzes real-time video of your particles using a Canty Vision Camera System
- Standard video format – can be recorded on any VCR or saved to disk. Digital video options
- Industrial microprocessor
- Multiple software process control packages
- 8 Channel 4-20 mA output (available for the rack mount computer only)
- Up to four video inputs standard (available for the rack mount computer only)
- Ethernet network interface standard
- Modem for factory support, file sharing

#### FEATURES

- Fiber optic lighting for true shape illumination
- Fused Glass, High Pressure / Temperature Seal From Process
- CCD Based High-Speed Imaging Device
- NEMA 4, Explosion proof / Flameproof Ratings are Available

#### SPECIFICATIONS

Ratings: Weather proof - NEMA 4, IP 66  
Explosion proof (U.S.) Class I, Div 1, Groups B,C&D, Flame proof (Europe) EEx d IIC T6 models are available.  
Wetted Mat'l. SS or Hastelloy

Shutter Speed: Variable up to 1/100,000

Power : 120 VAC , 60 Hz (230VAC / 50 Hz)

Approvals: CE marking for Europe (CCIR,PAL systems)

Video Format: Available models include:  
EIA (B&W - U.S. format)  
NTSC (Color - U.S. format)  
CCIR (B&W - European format)  
PAL - (Color - European format)

# Ordering Information

How To Order:

**Equipment:** The Vector image processing unit comes complete with software and technical start up service so your operators can learn and operate the system effectively.

The system includes a Canty camera/light unit with insertion tip and micro lens for particle viewing. This can be provided in a 50" insertion for retrofit through the reactor top, or an 8" insertion unit that would be mounted through the reactor side wall.

**VCB3411-PS Vector** (see sales sheet 99A8305 )

Windows™ based Rack Mount Canty Vector image analyzer with 4 camera input, 8 channel 4-20mA output, CD Rewritable drive for data backup, modem for factory support and video capture feature for recording live process view.

**EPS-8S-EXP Process Microscope Camera** (see sales sheet 99A7739)

Stainless steel wetted, 8" insertion camera to view into process fluid. Features include high speed digital camera, fiber-optic lighting, fused glass lens ready to mount to a 4"-150# nozzle.

## Process Microscope Camera



## Vector - Rack Mount Computer



JM Canty Inc Buffalo, NY USA Ph: (716) 625-4227 Fax: (716) 625-4228

JM Canty Ltd Dublin, Ireland Ph: + 353 (01) 459 8808 Fax: +353 (01) 462 5133